

# M0RQMU01

8-Port, 360°, Canister Antenna

## Kaelus Next Generation Base Station Antennas

- Ultra compact design with excellent pattern performance
- Covers all 3G, 4G LTE and 5G frequencies
- Electrical specifications as per NGMN P-Basta version 12.0

GENERAL (BASTA)	LB R1/R2	MB Y1/Y2
Frequency Range	617-894	1695-2690
Gain Over All Tilts [dBi]	9.2	11.9
Polarization	X	X
Azimuth Beamwidth [°]	Quasi-omni	Quasi-omni
Electrical Downtilt [°]	4	2-12
Number of Ports	4	4

## Specifications Antenna

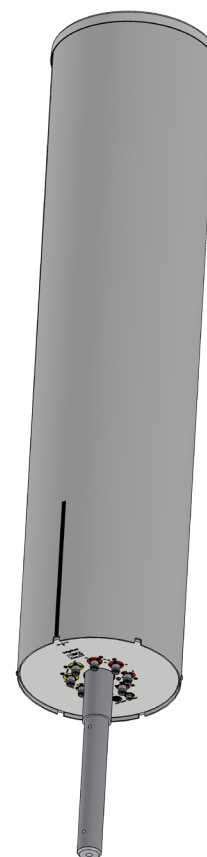
MECHANICAL SPECIFICATIONS ANTENNA	
Antenna Dimensions: Length, Diameter [in mm]	71 x 15.7   1800 x 400
Net Weight (Antenna) [lb kg]	59   27
Connector Type	4.3-10
Connector Quantity	8
Connector Position	Bottom
Windload, Calculation* [mph km/h]	93.2   150
Windload, Maximum [lb N]	86   381
Survival Wind Speed [mph km/h]	150   240
Radome Material	ASA
Radome Color [RAL]	7035
Product Environmental Compliance	RoHS
Lightning Protection	Yes - DC Ground

\* According to EN 1991-1-4:2005+A 1:2010

REMOTE ELECTRICAL TILT (RET) INFORMATION	
Type	Integrated, Non-Removable
Power Input	10 - 30V DC
Protocol	3GPP/AISG2.0
RET Interface	8-Pin DIN
RET Interface (Quantity)	2 (1 Male + 1 Female)

ENVIRONMENTAL COMPLIANCE	
ETSI EN300019-1-1 for Storage	Class 1.2
ETSI EN300019-1-2 for Transportation	Class 2.3
ETSI EN300019-1-4 for Environmental Conditions	Class 4.1E
Cold Temperature Survival [°F °C]	-40   -40
Hot Temperature Survival [°F °C]	140   60

SHIPPING AND ORDER INFORMATION	
Product Number	M0RQMU01-V1-P2
Packing Size: Length, Width, Depth [in mm]	96.5x23.4x22.5   2451x594x572
Shipping Weight [lb kg]	81.4   37

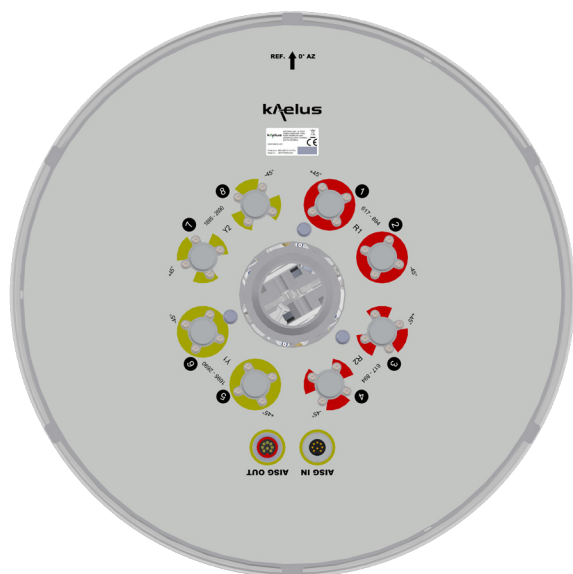


# M0RQMU01

8-Port, 360°, Canister Antenna

## Specifications Antenna

ELECTRICAL SPECIFICATIONS ANTENNA (BASTA)	LB R1/R2			MB Y1/Y2				
Frequency Range [MHz]	617-698	699-746	824-894	1695-1880	1900-2025	2095-2200	2300-2500	2500-2690
Gain, Average [dBi]	8.5	9.2	9.5	11.2	11.6	11.9	12.8	12.9
Half Power Beamwidth [°] (Horizontal)	Quasi-omni			Quasi-omni				
Half Power Beamwidth [°] (Vertical)	15.0±1	13.7±1	11.5±1	8.9±1	7.9±1	7.5±1	6.8±1	6.1±1
Electrical Downtilt [°]	4			2-12				
Elevation Downtilt Deviation [°]	±0.5	±0.5	±0.5	±0.5	±0.5	±0.5	±0.5	±0.5
First Upper Side Lobe Suppression [dB]	12	12	12	15	15	15	15	15
Upper Side Lobe Suppression [dB]	10	8	6	13	13	13	13	13
Polarization [°]	±45			±45				
Impedance [Ω]	50			50				
VSWR*	< 1.3:1 typical			< 1.3:1 typical				
Return Loss [dB]*	> 18.0 typical			> 18.0 typical				
Cross Polar Isolation [dB]*	25 typical			25 typical				
Passive Intermodulation (PIM) 3rd order, 2x20W [dBc]	< -153			< -153				
Maximum Effective Power Per Port [W]	150			150				
* Values not according to NGMN-P-Basta version 12.0								



Network planning files and datasheet in NGMN XML formats are available on request by email.

Kaelus follows the definitions and recommendations per NGMN P-Basta version 12.0 ([www.ngmn.org](http://www.ngmn.org)) within parameters shown on this datasheet.

All specifications are subject to change without notice. Visit [www.kaelus.com](http://www.kaelus.com) for the most current data sheets.

